

Special Education Quick Reference Guide

Student has suspected disability

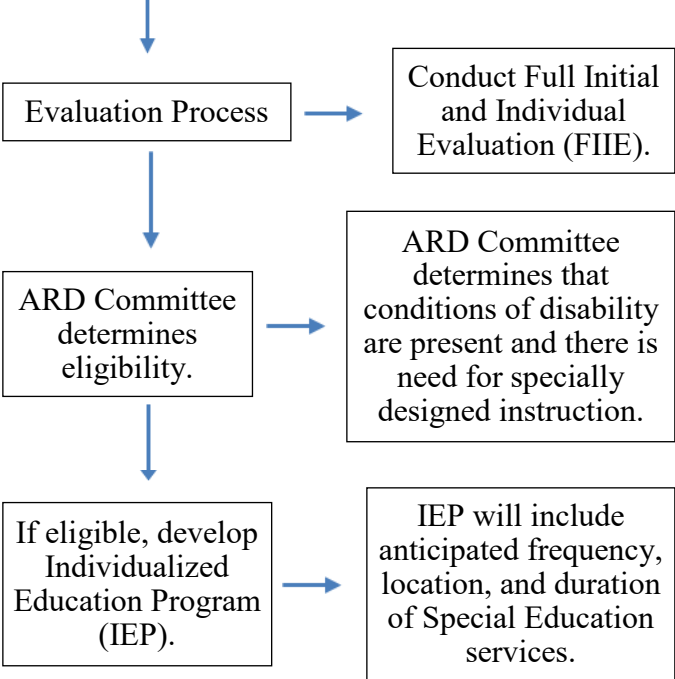
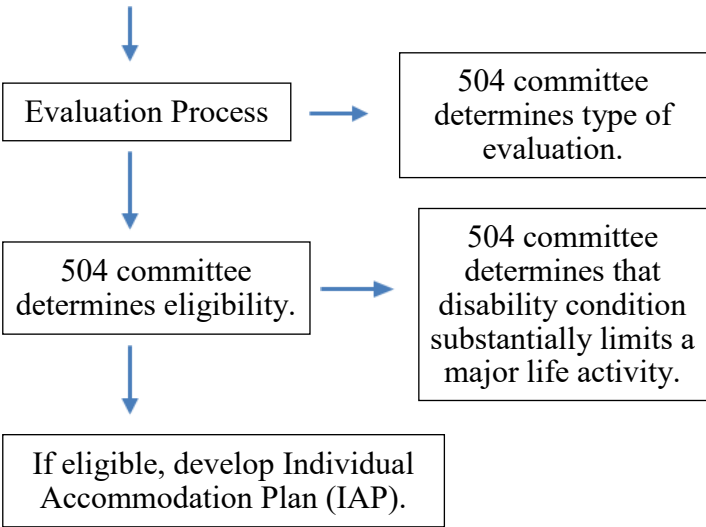
Review available data to determine if a referral to 504 or Special Education is appropriate. Data may include information from parent, physician, and school staff.

If implications of disability indicate substantial limitation to a major life activity and student may be able to function with intervention, accommodations, and/or assistive technology in general education classroom, consider referral to 504 COMMITTEE.

If implications of disability impact student's involvement and progress in general education curriculum, consider referral to SPECIAL EDUCATION.


504 Notice and Consent

Special Education Notice and Consent



If 504 committee determines that student needs are not appropriately met through 504, consider referral to SPECIAL EDUCATION.

***Information provided in part by Region 4 Education Service Center*

 The contents of this publication were developed under a grant from the US Department of Education, H328M150022 (PATH), H328M150023 (PEN), & H328M150024 (TEAM). However, those contents do not necessarily represent the policy of the US Department of Education, and you should not assume endorsement by the Federal Government.