

BOARD OF SCHOOL TRUSTEES

## KELLER INDEPENDENT SCHOOL DISTRICT

---

**12B. Report**

**Date: September 15, 2011**

**SUBJECT: ADEQUATE YEARLY PROGRESS**

**FUNCTION: Learning**

**DISTRICT KEY STRATEGIC PRIORITY:**

- **Educational Excellence; 1.1**

**FISCAL NOTE: None**

**Background Information:**

- Under accountability provisions in No Child Left Behind (NCLB) Act – All public school campuses, school districts, and states are evaluated for Adequate Yearly Progress (AYP).
- August 3, 2011 – 2011 Preliminary AYP Data Tables were released from TEA (Texas Education Agency)
- AYP includes: TAKS, TAKS (Accommodated), TAKS-M, TAKS –Alt, TELPAS Reading, and LAT in grades 3-8 and 10 (summed across grades) on the following measures:
  - Reading/ELA Performance (80%) and Mathematics Performance (75%)
  - Reading/ELA and Mathematics Participation (95%)
  - 4-Year Graduation Rate Goal (90%) or 4-Year Graduation Rate Target (75 %) or Safe harbor graduation rate Target (10% decrease difference between the prior year 4-year Graduation Rate and the 90% statewide goal) or Improvement of 1.0% or more 5-year Graduation Rate Target (80%)
  - Attendance Rate 2009-2010 (95%) for elementary and middle/junior high schools

**Administrative Considerations:**

- Ninety-one percent of KISD campuses Met AYP Standards while the two new campuses, Timberview and the Keller Early Learning Center, did not receive an AYP rating due to their new campus status.
- Keller Learning Center was evaluated using Alternate Education Accountability (AEA) procedures and earned the rating of Met AYP Standard.

- Three campuses did not meet AYP Standards in various indicators:
  - Basswood Elementary: Mathematics Performance,
  - North Riverside Elementary: Reading and Mathematics Performance, and
  - Heritage Elementary: Mathematics Performance
- If a campus, district, or state that is receiving Title I, a Part A fund fails to meet AYP for two consecutive years, that campus, district, or state is subject to certain sanctions. The following campuses received Title I, Part A funds for the 2010-2011 school year.
  - Caprock, North Riverside, Parkview, and Whitley Road Elementary.
- North Riverside did not meet the AYP Standard in Reading and Mathematics. This is the first year that North Riverside has not met the AYP Standard and the campus is not subject to any federal sanctions.
- District and campus Preliminary data tables are posted on the TEA website at: <http://ritter.tea.state.tx.us/ayp/2011/index.html>
- Final AYP Data Tables are anticipated November 2011.

**Communication Deployment:**

- Board Meeting Minutes

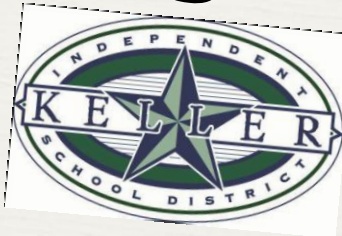
+++++

Respectfully submitted,

Deana Lopez  
Assistant Superintendent of Curriculum & Instruction

**September 15, 2011  
Board Meeting**

# **2011 Adequate Yearly Progress**



# Adequate Yearly Progress (AYP) Indicators and Standards

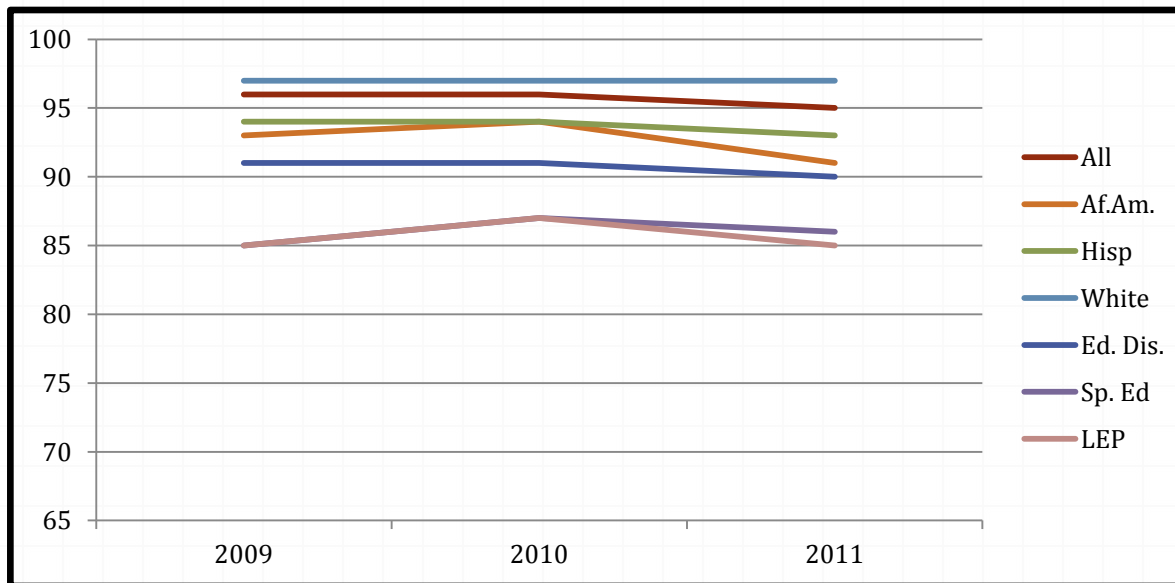
| Year  | 2006 | 2007 | 2008 | 2009 | 2010 | 2011 | 2012 | 2013 | 2014 |
|-------|------|------|------|------|------|------|------|------|------|
| R/ELA | 54%  | 60%  | 60%  | 67%  | 73%  | 80%  | 87%  | 93%  | 100% |
| Math  | 42%  | 50%  | 50%  | 58%  | 67%  | 75%  | 83%  | 92%  | 100% |

*Tests included in AYP Calculation: TAKS, TAKS-A, TAKS-M, TAKS-ALT, TELPAS, and LAT for Grades 3-8 and 10*

- **Participation:** 95% participation in state assessment (all students included)
- **Other Indicator:**
  - 75% Graduation Rate (High Schools only)
  - 90% Attendance Rate (Elementary, Intermediate, and Middle Schools)

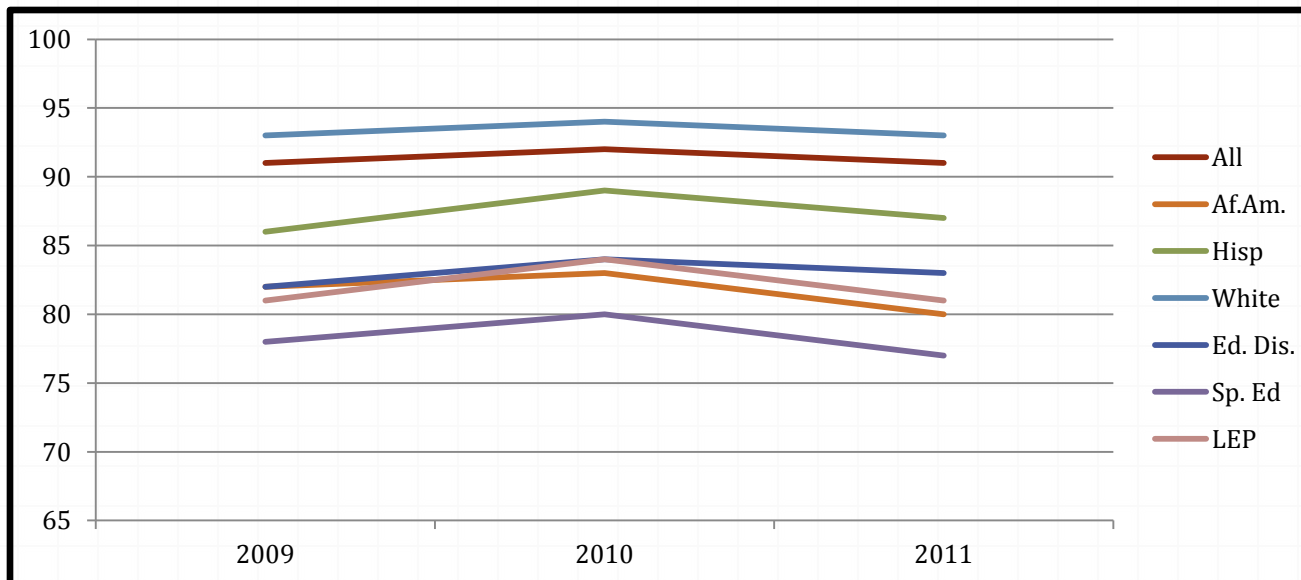
**Reading/ELA AYP Performance 3-8 & 10  
(2011 AYP Target 80%)**

| <b>Demographic Group</b> | <b>2009</b> | <b>2010</b> | <b>2011</b> |
|--------------------------|-------------|-------------|-------------|
| <b>All</b>               | 96          | 96          | 95          |
| <b>Af Am</b>             | 93          | 94          | 91          |
| <b>Hispanic</b>          | 94          | 94          | 93          |
| <b>White</b>             | 97          | 97          | 97          |
| <b>Ec Dis</b>            | 91          | 91          | 90          |
| <b>Sp Ed</b>             | 85          | 87          | 86          |
| <b>LEP Measure</b>       | 85          | 87          | 85          |



## Mathematics AYP Performance 3-8 & 10 (2011 AYP Target 75%)

| Demographic Group | 2009 | 2010 | 2011 |
|-------------------|------|------|------|
| All               | 91   | 92   | 91   |
| Af Am             | 82   | 83   | 80   |
| Hispanic          | 86   | 89   | 87   |
| White             | 93   | 94   | 93   |
| Ec Dis            | 82   | 84   | 83   |
| Sp Ed             | 78   | 80   | 77   |
| LEP Measure       | 81   | 84   | 81   |



**Reading/ELA AYP Participation 3-8 & 10  
(2011 AYP Target 95%)**

| <b>Demographic Group</b> | <b>2011</b> |
|--------------------------|-------------|
| All                      | 100         |
| Af Am                    | 99          |
| Hispanic                 | 100         |
| White                    | 100         |
| Ec Dis                   | 100         |
| Sp Ed                    | 100         |
| LEP Measure              | 99          |

**Mathematics AYP Participation 3-8 & 10  
(2011 AYP Target 95%)**

| <b>Demographic Group</b> | <b>2011</b> |
|--------------------------|-------------|
| All                      | 100         |
| Af Am                    | 100         |
| Hispanic                 | 100         |
| White                    | 100         |
| Ec Dis                   | 100         |
| Sp Ed                    | 100         |
| LEP Measure              | 100         |

**Graduation Rate Class of 2010  
Evaluated for "All Students" ONLY  
(2011 AYP Target 75%)**

|            | <b>Class of<br/>2008</b> | <b>Class Of<br/>2009</b> | <b>Classs of<br/>2010</b> |
|------------|--------------------------|--------------------------|---------------------------|
| <b>All</b> | <b>88.7</b>              | <b>91.4</b>              | <b>93</b>                 |

# Campus AYP 2011

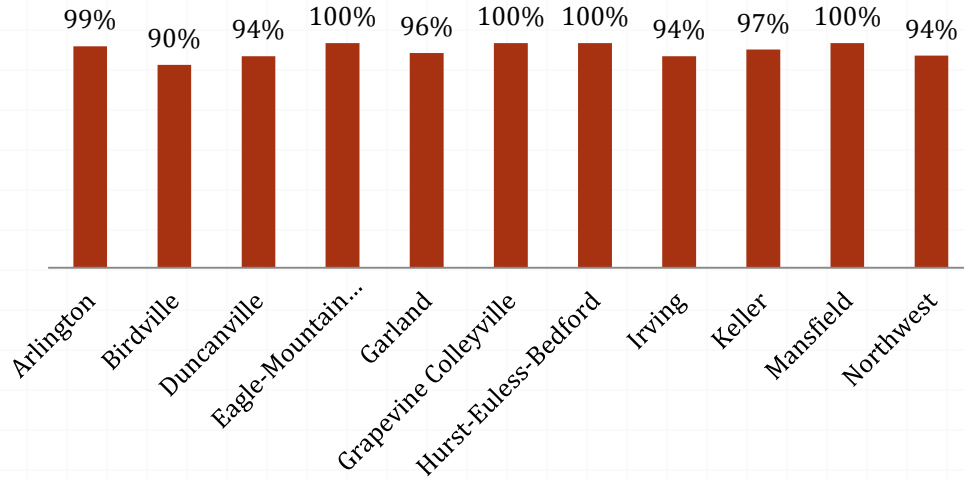
| Campus          | 2011 AYP Rating |
|-----------------|-----------------|
| Bette Perot     | Met AYP         |
| Bluebonnet      | Met AYP         |
| Basswood        | Missed AYP      |
| Caprock         | Met AYP         |
| Eagle Ridge     | Met AYP         |
| Florence        | Met AYP         |
| Freedom         | Met AYP         |
| Friendship      | Met AYP         |
| Heritage        | Missed AYP      |
| Hidden Lakes    | Met AYP         |
| Independence    | Met AYP         |
| Keller Harvel   | Met AYP         |
| Liberty         | Met AYP         |
| Lone Star       | Met AYP         |
| North Riverside | Missed AYP      |
| Parkview        | Met AYP         |
| Park Glen       | Met AYP         |
| Shady Grove     | Met AYP         |
| Whitley Road    | Met AYP         |
| Willis Lane     | Met AYP         |
| Woodland Spings | Met AYP         |

|                    |         |
|--------------------|---------|
| Bear Creek         | Met AYP |
| Chisholm Trail     | Met AYP |
| Parkwood Hill      | Met AYP |
| South Keller       | Met AYP |
| Trinity Meadows    | Met AYP |
|                    |         |
| Fossil Hill MS     | Met AYP |
| Hillwood MS        | Met AYP |
| Indian Springs MS  | Met AYP |
| Keller MS          | Met AYP |
| Trinity Springs MS | Met AYP |
|                    |         |
| Central High       | Met AYP |
| Fossil Ridge High  | Met AYP |
| Keller High        | Met AYP |
| Timber Creek High  | Met AYP |
|                    |         |
| KLC                | Met AYP |

# How does KISD Compare??

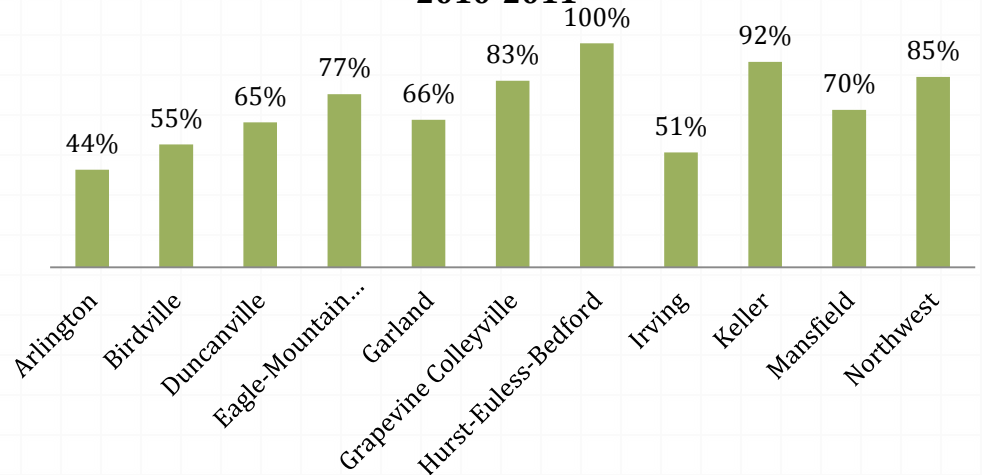
Percentage of Campuses Meeting AYP Standards

2009-2010



Percentage of Campuses Meeting AYP Standards

2010-2011



## 2011 KISD AYP Explanation Table

|                                   | All Students | African American | Hispanic | White | Econ. Disadv. | Special Education | LEP |
|-----------------------------------|--------------|------------------|----------|-------|---------------|-------------------|-----|
| <b>Performance: Reading/ELA</b>   | +            | +                | +        | +     | +             | +                 | +   |
| <b>Performance: Math</b>          | +            | +                | +        | +     | +             | +                 | +   |
| <b>Participation: Reading/ELA</b> | +            | +                | +        | +     | +             | +                 | +   |
| <b>Participation: Math</b>        | +            | +                | +        | +     | +             | +                 | +   |
| <b>Other: Graduation Rate</b>     | +            |                  |          |       |               |                   |     |
| <b>Other: Attendance Rate</b>     | -            |                  |          |       |               |                   |     |

**+ Meets AYP**

**- Not Evaluated for AYP due to not meeting minimum size criteria, alternative not used, or the measure is not applicable**