

BOARD OF SCHOOL TRUSTEES

KELLER INDEPENDENT SCHOOL DISTRICT

11D. Report

Date: September 9, 2010

SUBJECT: ADEQUATE YEARLY PROGRESS

FUNCTION: Learning

DISTRICT KEY STRATEGIC PRIORITY:

- **Educational Excellence; 1.1**

FISCAL NOTE: None

Background Information:

- Under the accountability provisions in the No Child Left Behind (NCLB) Act, all public school campuses, school districts, and the state are evaluated for Adequate Yearly Progress (AYP).
- 2010 District/Campus Adequate Yearly Progress (AYP) Data Tables were released from TEA (Texas Education Agency) this summer.
- Districts, campuses, and the state are required to meet AYP criteria based on 2009-2010 tests (TAKS, TAKS (Accommodated), TAKS-M, TAKS –Alt, TELPAS Reading, and LAT in grades 3-8 and 10 (summed across grades)) on the following measures:
 - Reading/ELA Performance (73%) and Mathematics Performance (67%)
 - Reading/ELA and Mathematics Participation (95%)
 - 4-Year Graduation Rate Goal (90%) or 4-Year Graduation Rate Target (75 %) or Safe harbor graduation rate Target (10% decrease difference between the prior year 4-year Graduation Rate and the 90% statewide goal) or Improvement of 1.0% or more 5-year Graduation Rate Target (80%)
 - Attendance Rate 2008-2009 (90%) for elementary and middle/junior high schools.

Administrative Considerations:

- If a campus, district, or state that is receiving Title I, Part A funds fails to meet AYP for two consecutive years, that campus, district, or state is subject to certain sanctions. The following campuses received Title I, Part A funds for the 09-10 school year.
 - Caprock, North Riverside, Parkview, and Whitley Road Elementary.

- Keller ISD and all campuses receiving Title I, Part A funds met AYP.
- All campuses under regular state accountability standards met federal accountability AYP.
- New Direction Learning Center falls under alternative measures at the state level, but must meet the same criteria for AYP as all other campuses. New Direction Learning Center (NDLC) did not meet AYP. NDLC missed AYP standards by one student on graduation rates.
- District and campus data tables are posted on the TEA website at: <http://ritter.tea.state.tx.us/ayp/2010/index.html>

Communication Deployment:

- Board Meeting Minutes

+++++

Respectfully submitted,

Deana Lopez
Assistant Superintendent of Curriculum & Instruction

C O N F I D E N T I A L

T E X A S E D U C A T I O N A G E N C Y
Adequate Yearly Progress District Data Table

Preliminary 2010 AYP Results

District Name: KELLER (220907)

	All Students	African American	Hispanic	White	Econ. Disadv.	Special Education	LEP (Measure: Current & Monitored)	LEP (Students)
--	--------------	------------------	----------	-------	---------------	-------------------	------------------------------------	----------------

Performance: Reading/English Language Arts (ELA) (AYP Target: 73%)

AYP Proficiency Rate

2009-10 Assessments

Met Standard	16,245	1,247	2,599	11,006	2,929	1,081	890	n/a
Number Tested	16,875	1,333	2,770	11,317	3,221	1,240	1,021	737
% Met Standard	96%	94%	94%	97%	91%	87%	87%	n/a
Student Group %	100%	8%	16%	67%	19%	7%	n/a	4%

Performance Improvement/Safe Harbor

2008-09 Assessments

Met Standard	15,666	1,184	2,517	10,750	2,480	974	742	n/a
Number Tested	16,288	1,274	2,689	11,050	2,718	1,151	868	644
% Met Standard	96%	93%	94%	97%	91%	85%	85%	n/a

Change in % Met Standard	0	1	0	0	0	2	2	
--------------------------	---	---	---	---	---	---	---	--

2009-10 AYP Proficiency Rate including Growth

Met Standard or Growth	16,622	1,297	2,700	11,203	3,096	1,150	956	
Number Tested	16,875	1,333	2,770	11,317	3,221	1,240	1,021	
% Met Standard or Growth	99%	97%	97%	99%	96%	93%	94%	

The preview data tables are not masked to protect individual student confidentiality. Individual student information (including aggregate counts of less than 5) in the tables is confidential under the Family Educational Rights and Privacy Act (FERPA). The agency additionally takes the position that the tables at this stage of the accountability review process constitute "agency audit workpapers" and are not required to be disclosed under the Texas Public Information Act. Masked data tables are available on the TEA public website on August 5, 2010.

n/a indicates that the data are not available or applicable
A dash (-) indicates there were no students in that group

C O N F I D E N T I A L

T E X A S E D U C A T I O N A G E N C Y
Adequate Yearly Progress District Data Table

Preliminary 2010 AYP Results

District Name: KELLER (220907)

	All Students	African American	Hispanic	White	Econ. Disadv.	Special Education	LEP (Measure: Current & Monitored)	LEP (Students)
--	-----------------	---------------------	----------	-------	------------------	----------------------	---	-------------------

Performance: Mathematics (AYP Target: 67%)

AYP Proficiency Rate

2009-10 Assessments

Met Standard	15,567	1,101	2,453	10,649	2,701	989	861	n/a
Number Tested	16,873	1,328	2,768	11,323	3,215	1,240	1,019	735
% Met Standard	92%	83%	89%	94%	84%	80%	84%	n/a
Student Group %	100%	8%	16%	67%	19%	7%	n/a	4%

Performance Improvement/Safe Harbor

2008-09 Assessments

Met Standard	14,833	1,051	2,314	10,265	2,238	893	703	n/a
Number Tested	16,281	1,276	2,680	11,045	2,717	1,146	867	642
% Met Standard	91%	82%	86%	93%	82%	78%	81%	n/a

Change in % Met Standard	1	1	3	1	2	2	3	
--------------------------	---	---	---	---	---	---	---	--

2009-10 AYP Proficiency Rate including Growth

Met Standard or Growth	16,205	1,211	2,587	11,003	2,896	1,063	913	
Number Tested	16,873	1,328	2,768	11,323	3,215	1,240	1,019	
% Met Standard or Growth	96%	91%	93%	97%	90%	86%	90%	

The preview data tables are not masked to protect individual student confidentiality. Individual student information (including aggregate counts of less than 5) in the tables is confidential under the Family Educational Rights and Privacy Act (FERPA). The agency additionally takes the position that the tables at this stage of the accountability review process constitute "agency audit workpapers" and are not required to be disclosed under the Texas Public Information Act. Masked data tables are available on the TEA public website on August 5, 2010.

n/a indicates that the data are not available or applicable
A dash (-) indicates there were no students in that group

C O N F I D E N T I A L

T E X A S E D U C A T I O N A G E N C Y
Adequate Yearly Progress District Data Table

Preliminary 2010 AYP Results

District Name: KELLER (220907)

	All Students	African American	Hispanic	White	Econ. Disadv.	Special Education	LEP (Measure)	LEP (Students)
--	-----------------	---------------------	----------	-------	------------------	----------------------	------------------	-------------------

Participation: Reading/ELA (AYP Target: 95%)

2009-10 Assessments

Number Participating	17,462	1,424	2,877	11,639	3,412	1,301		806
Total Students	17,520	1,427	2,887	11,676	3,426	1,307		818
Participation Rate	100%	100%	100%	100%	100%	100%		99%
Student Group %	100%	8%	16%	67%	20%	7%		5%

2008-09 Assessments

Number Participating	16,942	1,372	2,803	11,448	2,885	1,214		691
Total Students	16,996	1,377	2,812	11,480	2,897	1,219		703
Participation Rate	100%	100%	100%	100%	100%	100%		98%

Participation: Mathematics (AYP Target: 95%)

2009-10 Assessments

Number Participating	17,476	1,419	2,877	11,653	3,410	1,300		810
Total Students	17,518	1,428	2,882	11,681	3,423	1,305		812
Participation Rate	100%	99%	100%	100%	100%	100%		100%
Student Group %	100%	8%	16%	67%	20%	7%		5%

2008-09 Assessments

Number Participating	16,915	1,372	2,795	11,421	2,880	1,211		694
Total Students	16,961	1,373	2,807	11,453	2,887	1,218		699
Participation Rate	100%	100%	100%	100%	100%	99%		99%

C O N F I D E N T I A L

T E X A S E D U C A T I O N A G E N C Y
Adequate Yearly Progress District Data Table

Preliminary 2010 AYP Results

District Name: KELLER (220907)

	All Students	African American	Hispanic	White	Econ. Disadv.	Special Education	LEP (Measure: Ever HS)	LEP (Students)
--	-----------------	---------------------	----------	-------	------------------	----------------------	------------------------------	-------------------

Four-Year Longitudinal Cohort

Graduation Rate Class of 2009 (AYP Target: 75%)

Graduates	1,688	122	259	1,171	176	85	29	19
Number in Class	1,847	142	306	1,256	205	101	49	31
Graduation Rate	91.4%	85.9%	84.6%	93.2%	85.9%	84.2%	59.2%	61.3%
Student Group %	100%	8%	17%	68%	11%	5%	n/a	2%

Graduation Rate Class of 2008 (Safe Harbor or Improvement of 1.0)

Graduates	1,606	114	194	1,170	110	59	18	12
Number in Class	1,811	136	243	1,284	148	80	41	28
Graduation Rate	88.7%	83.8%	79.8%	91.1%	74.3%	73.8%	43.9%	42.9%

Change 2008 to 2009	2.7	2.1	4.8	2.1	11.6	10.4	15.3	
Safe Harbor Target	0.1	0.6	1.0	-0.1	1.6	1.6	4.6	

Five-Year Longitudinal Cohort (AYP Target: 80%)

Class of 2008 Five-Year Graduation Rate

Graduates	1,646	119	207	1,187	118	64	26	17
Number in Class	1,796	134	238	1,277	145	80	41	28
Graduation Rate	91.6%	88.8%	87.0%	93.0%	81.4%	80.0%	63.4%	60.7%

Decreases in graduation rates may be due to significant changes in the dropout definition beginning with the 2005-06 school year.

C O N F I D E N T I A L

T E X A S E D U C A T I O N A G E N C Y
Adequate Yearly Progress District Data Table

Preliminary 2010 AYP Results

District Name: KELLER (220907)

2010 AYP Explanation Table

	All Students	African American	Hispanic	White	Econ. Disadv.	Special Education	LEP
Performance: Reading/ELA	+	+	+	+	+	+	+
Performance: Math	+	+	+	+	+	+	+
Participation: Reading/ELA	+	+	+	+	+	+	+
Participation: Math	+	+	+	+	+	+	+
Other: Graduation Rate	+						
Other: Attendance Rate	-						

+ Meets AYP

- Not Evaluated for AYP due to not meeting minimum size criteria, alternative not used, or the measure is not applicable

% Missed AYP for this performance measure due to the 2% and/or the 1% federal caps

X Missed AYP for this measure

**September 9, 2010
Board Meeting**

2010 Adequate Yearly Progress



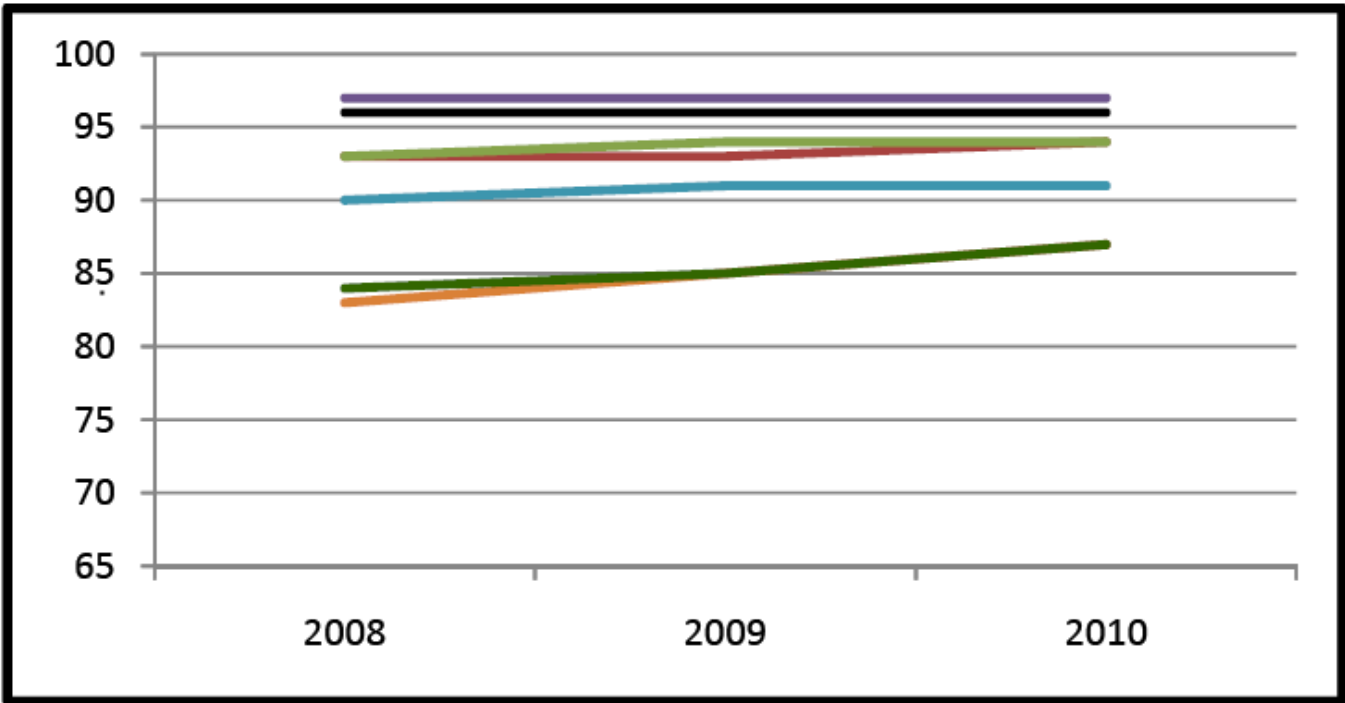
Adequate Yearly Progress (AYP) Indicators

o Reading/English Language Arts

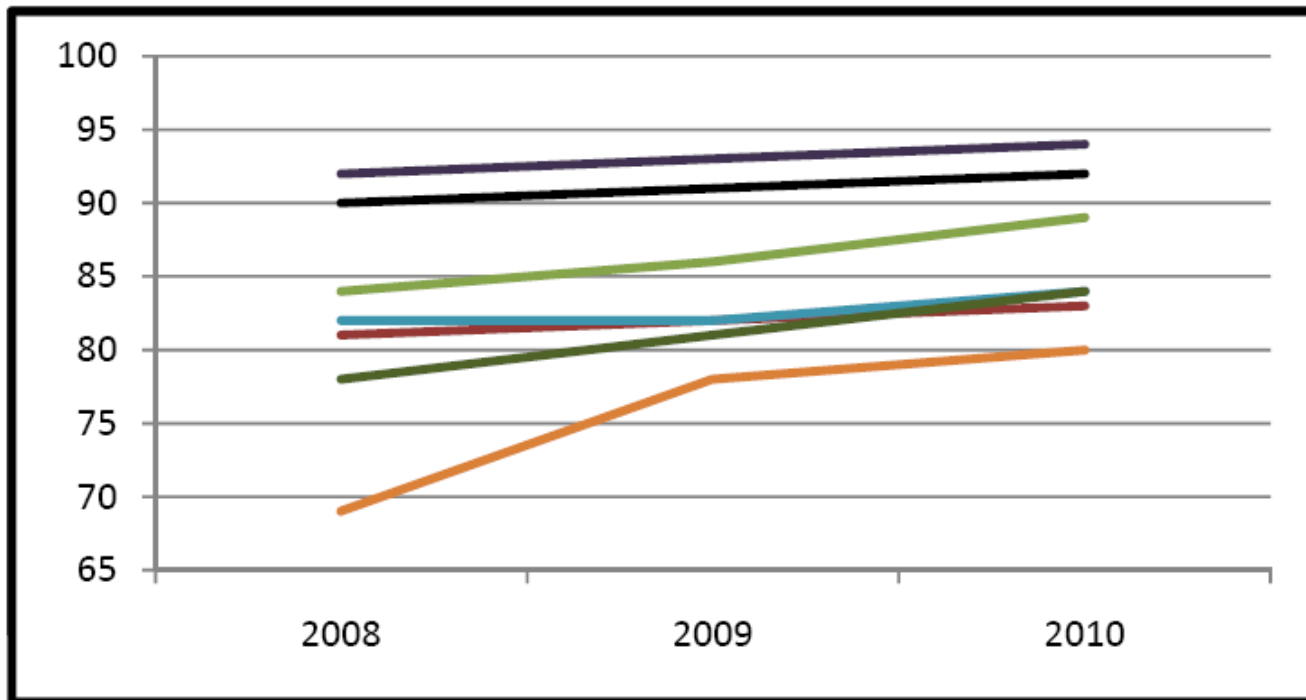
o Mathematics

o Graduation Rate or Attendance rate

Reading/ELA AYP Performance 3-8 & 10 (2010 AYP Target 73%)			
Demographic Group	2008	2009	2010
All	96	96	96
Af Am	93	93	94
Hispanic	93	94	94
White	97	97	97
Ec Dis	90	91	91
Sp Ed	83	85	87
LEP Measure	84	85	87



Mathematics AYP Performance 3-8 & 10 (2010 AYP Target 67%)			
Demographic Group	2008	2009	2010
All	90	91	92
Af Am	81	82	83
Hispanic	84	86	89
White	92	93	94
Ec Dis	82	82	84
Sp Ed	69	78	80
LEP Measure	78	81	84



Reading/ELA AYP Participation 3-8 & 10 (Target 95%)		
Demographic Group	Class of 2010	
All	100%	2008-2009 Reading/ELA Participation ranges from 98%-100%
Af Am	100%	
Hispanic	100%	
White	100%	
Ec Dis	100%	
Sp Ed	100%	
LEP Measure	99%	

Mathematics AYP Participation 3-8 & 10 (Target 95%)		
Demographic Group	Class of 2010	
All	100%	2008-2009 Mathematics Participation ranges from 99%-100%
Af Am	99%	
Hispanic	100%	
White	100%	
Ec Dis	100%	
Sp Ed	100%	
LEP Measure	100%	

**Graduation Rate Class of 2009
Evaluated for "All Students" only
(2010 AYP Target 75%)**

	Class of 2007	Class of 2008	Class of 2009
All	89.0	88.7	91.4

Campus AYP

Campus	2010 AYP Rating
Bette Perot ES	Met AYP
Bluebonnet ES	Met AYP
Basswood ES	Met AYP
Caprock ES	Met AYP
Eagle Ridge ES	Met AYP
Florence ES	Met AYP
Freedom ES	Met AYP
Friendship ES	Met AYP
Heritage ES	Met AYP
Hidden Lakes ES	Met AYP
Independence ES	Met AYP
Keller-Harvel ES	Met AYP
Liberty ES	Met AYP
Lone Star ES	Met AYP
North Riverside ES	Met AYP
Parkview ES	Met AYP
Park Glen ES	Met AYP
Shady Grove ES	Met AYP
Whitley Road ES	Met AYP
Willis Lane ES	Met AYP
Woodland Sp. ES	Met AYP

Campus	2010 AYP Rating
Bear Creek IS	Met AYP
Chisholm Trail IS	Met AYP
Parkwood Hill IS	Met AYP
South Keller IS	Met AYP
Trinity Meadows IS	Met AYP
Fossil Hill MS	Met AYP
Hillwood MS	Met AYP
Indian Springs MS	Met AYP
Keller MS	Met AYP
Trinity Springs MS	Met AYP
Central HS	Met AYP
Fossil Ridge HS	Met AYP
Keller HS	Met AYP
Timber Creek HS	N/A
Keller Learning Center	Missed AYP: Graduation Rate

2010 AYP Explanation Table

	All Students	African American	Hispanic	White	Econ. Disadv.	Special Education	LEP
Performance: Reading/ELA	+	+	+	+	+	+	+
Performance: Math	+	+	+	+	+	+	+
Participation: Reading/ELA	+	+	+	+	+	+	+
Participation: Math	+	+	+	+	+	+	+
Other: Graduation Rate	+						
Other: Attendance Rate	-						

+ Meets AYP

- Not Evaluated for AYP due to not meeting minimum size criteria, alternative not used, or the measure is not applicable