



BOARD OF SCHOOL TRUSTEES

**KELLER INDEPENDENT SCHOOL DISTRICT**

**11D. Report**

**Date: September 22, 2008**

**SUBJECT: TRANSPORTATION**

**BOARD GOAL: All systems in the Keller Independent School District will be effective, efficient, and accountable in support of the district's mission.**

**FISCAL NOTE: Increased routes will affect this year's budget.**

**Background Information:**

- Durham School Services provides 100 bus routes in order to provide transportation to all eligible Keller ISD students
- Currently in year five of the five-year contract

**Administrative Considerations:**

- Durham School Services transports 20.7% of the total enrollment in Keller ISD.
- 8 new regular education bus routes and 2 Special Education bus routes were added to the 2008-2009 school year in order to accommodate increased enrollment.
- Durham is in the process of applying for a grant from the Texas Commission on Environmental Quality up to \$250,000 to use for retrofitting of buses with diesel emissions reduction devices.
- Durham will update the Board on the first weeks of operation for the 2008-09 school year and respond to any questions.

+++++

Respectfully submitted,

Dana Chandler,  
General Manager Durham School Services



---

# Transportation Update

## Keller ISD

September 2008

A passenger is picked up and delivered to a destination on time, safely and securely, every time.

**Confidential**



## Keller ISD Transportation

### 2007-2008

- **Number of Routes – 90**
  - Regular Education – 55
  - Special Education – 35
  - Mid-day – 28
  - Rocky Top – 1 (Durham donated)
- **Number of Students – 16.7% of the Total Enrollment**
- **Regular Education – 4,796**
  - Special Education - 353
- **Number of Campuses – 33**
  - Elementary – 19
  - Secondary - 14
- **Number of Drivers – 100**
- **Number of Aides - 35**

### 2008-2009

- **Number of Routes – 101**
  - Regular Education – 63
  - Special Education – 37
  - Mid-day – 28
  - Rocky Top – Not Yet started (Durham donated)
  - Pay for Ride – 1 (Durham Donated) # Riders - 76
- **Number of Students – 20.7% of the Total Enrollment**
- **Regular Education – 5,567**
  - Special Education - 372
- **Number of Campuses – 35**
  - Elementary – 21
  - Secondary - 14
- **Total Number of Drivers – 120**
- **Total Number of Aides - 48**

A passenger is picked up and delivered to a destination on time, safely and securely, every time.

**Confidential**



## Operations

### ▪ Number of Hazardous Area Routes – 5

- Addition of 3 stops were created and added to an existing bus route for Basswood ES where students would have to walk across Interstate 35
- PFR – route was created to help parents with a need for transportation for students living in the Woodland Springs area going to Trinity Springs MS and Trinity Meadows IS.

### ▪ Staff –

- Dana Chandler, General Manager
- Tammy Slimp, Operations Supervisor
- Dee Wesolowski, Routing Coordinator
- Michele House, Safety and Training \*\*\*NEW\*\*\*
- Mark Walters, Maintenance Supervisor \*\*\*NEW\*\*\*
- Abby Rodriguez, General Administration
- Jason Lowery, Field Trip Coordinator and PM Dispatcher \*\*\*NEW\*\*\*
- Belinda Ginder, AM Dispatcher \*\*\*NEW\*\*\*

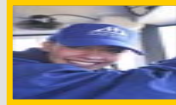
### • Regular Route/ Special Education Drivers – 101

### • Spare Drivers - 19

### • Bus Assistants – 38 Spare Bus Assistants - 10

A passenger is picked up and delivered to a destination on time, safely and securely, every time.

**Confidential**



## What we have done so far...

- This summer we completed 8 hours of training based on improving Customer Service through Active Listening- Body language, Paraphrasing and Empathy .
- Telephone Techniques training was given to all office staff personnel.
- An ad was placed in the Keller Citizen notifying all Keller ISD parents that bus route information would be sent to eligible students homes and could also be found on the Transfinder website.
- Postcards were sent on August 15, 2008 notifying all eligible students of bus route information.
- Our drivers and monitors were brought back from Summer break a week early. This enabled them to run bus routes daily to ensure on time and accurate performance.

A passenger is picked up and delivered to a destination on time, safely and securely, every time.

**Confidential**

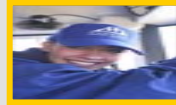


## What we have done so far...

- All schools were given route binders with their schools route information which included bus stops and a list of students names that were eligible for each bus stop.
- Elementary Schools that had more than one bus route at each campus were given color coordinated tags to make sure children were loaded on the correct buses.
- Meet the teacher nights were attended by Durham Employees to help parents with bus route information.
- All current Drivers were all given \$1.00 an hour pay increase
- All current Bus Assistants were given \$.75 an hour pay increase

A passenger is picked up and delivered to a destination on time, safely and securely, every time.

**Confidential**



## What we have done so far...

- Driver's starting pay increased by \$.73 an hour
- Bus Assistant's starting pay increased by \$.60 an hour
- Staffing – 2 weeks prior to school start we had a full complement of Drivers and Bus Assistants including a 20% spare driver ratio. Since we had extra employees we were able to send drivers to Burleson ISD to help assist them with their second week of school.
- Leased parking lot space at the old Tom Thumb at Beach and Basswood for overflow parking
- Started scheduling of Bus evacuations – Fall Bus Evacuations will begin October 1, 2008
- On Friday, September 12<sup>th</sup> we received word from the Texas Commission On Environmental Quality that 3<sup>rd</sup> party bus owners will be eligible to receive consideration for funding to allow public school districts to purchase and install retrofit emission reduction devices for school buses. On Monday, September 15<sup>th</sup> we began the lengthy process to apply for these grant monies.  
The goal of this program is to help reduce children's exposure to diesel exhaust in and around school buses.

A passenger is picked up and delivered to a destination on time, safely and securely, every time.

**Confidential**



National  
Express  
Corp



# Discussion