

2019 Bond Program Update



CBOC
July 2021

Agenda

Welcome/Background

Bond Program Financial Metrics

Bond Program Schedule

Upcoming Board Approvals

Florence and Heritage Elementary Schools Progress

Parkview and Whitley Road Elementary Schools Progress

Fossil Hill Middle School Fine Arts Addition/Renovation Progress

Secure Entry Vestibules Phase No. 2 Progress

Summer MEP Project Progress

High School Indoor Extracurricular Program Facilities

Crisis Counseling Suites

Agriscience Center Project Update



Background

- On May 13, 2019, the Administration received approval from the Board of Trustees to implement the findings of a facility plan created by the Long Range Facility Planning Committee.
- The approved plan includes \$315M in facility improvements throughout the District over the next several years.
- The plan was approved during the November 5th Bond Election.



Program Financial Metrics

- Total Encumbered to date : \$228,385,468
- Reconciled with Finance monthly
- Financial summary as of 7/20/2021
- Total expenditures paid to date: 86,378,040

2019 BOND PROGRAM FINANCIAL SUMMARY				
PROJECT TITLE	BUDGET BREAKDOWN			
	Total Budget	Encumbrances	Expenditures	Balance
Heritage Elementary Re-Build Project	\$ 29,949,883	\$ 29,949,883	\$17,056,240.90	\$ -
Florence Elementary Re-Build Project	\$ 29,949,883	\$ 29,244,130	\$16,965,794.24	\$ 705,753
Parkview Elementary Re-Build Project	\$ 33,309,461	\$ 28,782,597	\$2,627,308.46	\$ 4,526,864
Whitley Road Elementary Re-Build Project	\$ 32,100,230	\$ 27,414,045	\$3,678,477.73	\$ 4,686,185
Fossil Hill Middle School Renovation Project	\$ 18,288,062	\$ 15,630,345	\$1,747,314.09	\$ 2,657,717
Keller Middle School Renovation Project	\$ 25,288,150	\$ 1,843,024.76	\$442,657.37	\$ 23,445,125
Industrial Trades and Agriscience Center Project	\$ 21,509,217	\$ 1,085,641.25	\$ 532,688.23	\$ 20,423,576
Keller HS Indoor Extra-Curricular Program Facility	\$ 12,140,683	\$ 9,582,389.70	\$626,372.78	\$ 2,558,293
Fossil Ridge HS Indoor Extra-Curricular Program Facility	\$ 12,140,683	\$ 9,552,455.06	\$582,153.08	\$ 2,588,228
Central HS Indoor Extra-Curricular Program Facility	\$ 12,140,684	\$ 9,553,326.75	\$612,280.27	\$ 2,587,357
Timber Creek HS Indoor Extra-Curricular Program Facility	\$ 12,140,684	\$ 9,561,720.75	\$592,673.77	\$ 2,578,963
Technology Infrastructure Projects and Device Purchases	\$ 26,291,177	\$ 26,172,200.83	\$22,961,636.44	\$ 118,976
Security Infrastructure Projects and Device Purchases	\$ 11,419,495	\$ 9,425,274.19	\$7,074,713.90	\$ 1,994,221
MEP Projects and Life Safety System Upgrades	\$ 25,094,100	\$ 12,477,593.24	\$7,376,746.25	\$ 12,616,507
Campus Security Initiative Construction Projects	\$ 6,898,000	\$ 6,050,102.51	\$870,300.81	\$ 847,897
High School Auditorium Equipment/System Upgrad Projects	\$ 4,900,000	\$ 1,798,531.73	\$2,367,999.05	\$ 3,101,468
Bond Program Management	\$ 1,439,608	\$ 262,208.22	\$262,683.22	\$ 1,177,400
TOTAL	\$ 315,000,000	\$ 228,385,468.50	\$ 86,378,040.59	\$ 86,614,532

Note: Encumbrances include Purchase orders & Board Approvals



Projects in Construction

PROJECT TITLE	PHASE	SCHEDULE STATUS	PLANNED COMPLETION DATE	PROJECTED COMPLETION DATE	DESIGN/ CONSTRUCTION % COMPLETE	NOTES
Secure Entry Vestibules Phase No.1	COMPLETE	COMPLETE	8/7/2020	1/29/2021	100%	Project is in closeout, delays attributable to COVID-19
Winter Storm Emergency MEP Projects	COMPLETE	COMPLETE	4/16/2021	4/16/2021	100%	Storm damage at SGES required the existing boiler, hot water heater and (2) pumps to be replaced over Spring Break. Central High School Boiler #2 was installed mid April 2021.
Mechanical Electrical Plumbing (MEP) Winter and Spring Break Project	CONSTRUCTION	COMPLETE	1/1/2021	5/28/2021	100%	Delays attributable to COVID-19
Improvements to High School Auditoriums	CONSTRUCTION	COMPLETE	12/1/2020	5/28/2021	100%	Project is in closeout, delays attributable to COVID-19
Heritage Elementary Re-Build Project	CONSTRUCTION	ON SCHEDULE	7/30/2021	7/30/2021	85%	FF&E move in coordination in progress, GC is working to obtain temporary occupancy to move in furniture and permanent occupancy for opening in August.
Florence Elementary Re-Build Project	CONSTRUCTION	ON SCHEDULE	7/30/2021	7/30/2021	85%	FF&E move in coordination in progress, GC is working to obtain temporary occupancy to move in furniture and permanent occupancy for opening in August.
Parkview Elementary Re-Build Project	CONSTRUCTION	BEHIND SCHEDULE	8/19/2022	8/19/2022	10%	Installing portables and supporting utilities and commencing site grading activities. Extensive rain is causing delays and total impact is being evaluated by the team.
Whitley Road Elementary Re-Build Project	CONSTRUCTION	BEHIND SCHEDULE	10/28/2022	10/28/2022	10%	The foundation slab is in place and utility connections are being made. Extensive rain is causing delays and total impact is being evaluated by the team.
Fossil Hill Middle School Fine Arts Addition & Renovation Project	CONSTRUCTION	ON SCHEDULE	7/30/2022	7/30/2022	10%	Site grading and utilities are underway for the addition and renovations in the gym will be completed by the end of the summer break.
MEP Projects and Life Safety System Upgrades (Group 2)	CONSTRUCTION	ON SCHEDULE	7/30/2021	7/30/2021	70%	Construction activities are underway and will be ongoing throughout the summer at 12 KISD campuses.
Keller HS Indoor Extra-Curricular Program Facility	CONSTRUCTION	ON SCHEDULE	7/27/2022	7/27/2022	0%	Construction activities will not start until after the existing tennis courts have been relocated in the early fall time period. Structural steel will not arrive until January 2022.
Fossil Ridge HS Indoor Extra-Curricular Program Facility	CONSTRUCTION	ON SCHEDULE	7/27/2022	7/27/2022	0%	Construction activities will not start until after the existing Heritage ES is demolished this summer. Structural steel will not arrive until January 2022.
Central HS Indoor Extra-Curricular Program Facility	CONSTRUCTION	ON SCHEDULE	7/27/2022	7/27/2022	0%	Construction will start on July 1, 2021. Structural steel will not arrive until January 2022.
Timber Creek HS Indoor Extra-Curricular Program Facility	CONSTRUCTION	ON SCHEDULE	7/27/2022	7/27/2022	0%	Construction activities will not start until November to allow for band access to the adjoining parking area where utility tie ins are required. Structural steel will not arrive until January 2022.
Secure Entry Vestibules Phase No.2	CONSTRUCTION	ON SCHEDULE	8/13/2021	8/13/2021	70%	Construction is ongoing and on track to be completed by the end of the summer.
Crisis Counseling Suites	CONSTRUCTION	ON SCHEDULE	2/22/2022	2/22/2022	5%	Construction activity will commence at KCA starting July 1, 2021.

Data current as of 7/13/2021



Projects in Design

PROJECT TITLE	PHASE	SCHEDULE STATUS	PLANNED COMPLETION DATE	PROJECTED COMPLETION DATE	DESIGN/ CONSTRUCTION % COMPLETE	NOTES
Agriscience Center Project at Trinity Meadows Site	DESIGN	ON SCHEDULE	8/27/2021	8/27/2021	100%	- Bid steel package April 14-27, award bid alternate for steel package 5/10/2021 - Finalize design package 6/18/2021 - Bid period 6/21/2021 to 7/19/2021 - Award CSP 7/26/2021
Industrial Trades Project at KCAL	DESIGN	BEHIND SCHEDULE	8/27/2021	12/5/2021	50%	- VLK present schematic design 5/24/2021 - Bid period 10/18/21 11/5/2021 - Award CSP 11/15/21
Keller Middle School Fine Arts Addition & Renovation Project	DESIGN	BEHIND SCHEDULE	12/30/2022	TBD	30%	- The schematic design approved by the CBOC and BOT June 2021.

Data current as of 7/13/2021



Upcoming Board Approvals

Board of Trustees Contract Approval Requests

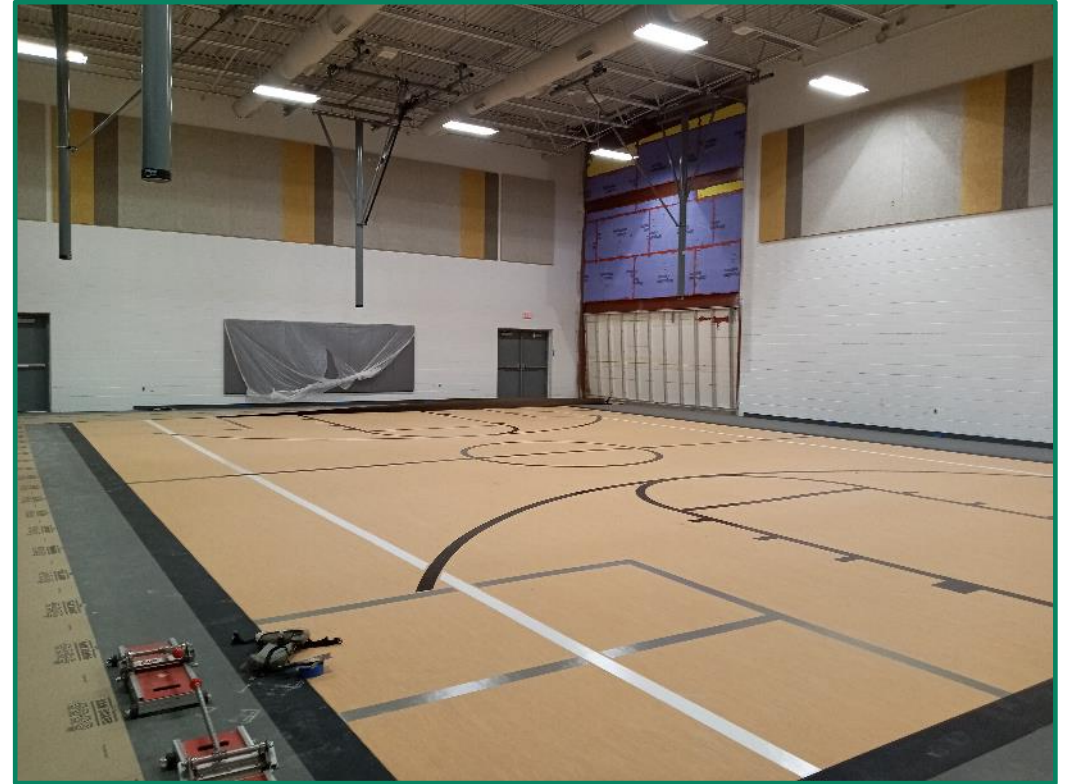
- July 26
 - ✓ Contract for Agriscience Center
 - ✓ Contract for Access Control, Security Cameras and devices for Parkview ES and Whitley Road ES
- September 27
 - ✓ Contract for KCAL Parking Lot Expansion
- November 15
 - ✓ Contract for KCAL Addition/Renovation



Heritage Elementary Schools Progress



Heritage ES Existing School Demolition



Heritage ES Gym

Heritage ES is on track to open for the next school year. Furniture delivery installation 7/21 – 7/29

Final Clean week of 8/2 and ready for staff occupancy week of 8/9

Site work and demolition will carry into the December/January time frame.

Florence Elementary Schools Progress



Cafetorium Area



Main Parking Lot

Florence ES is on track to open for the next school year. Furniture delivery installation 7/21 – 7/29

Final Clean week of 8/2 and ready for staff occupancy week of 8/9

Asbestos abatement ongoing, site work and demolition will carry into the December/January time frame.

Parkview Elementary School Progress



Site grading & temporary Fire Wall



Temporary staff parking and bus loop

Site utility, demolition, grading, and portable connections are being made at Parkview ES. Temporary bus loop and staff parking lot is complete.

Weather is causing delays to the construction schedule

Whitley Road Elementary School Progress



Storm Shelter Progress



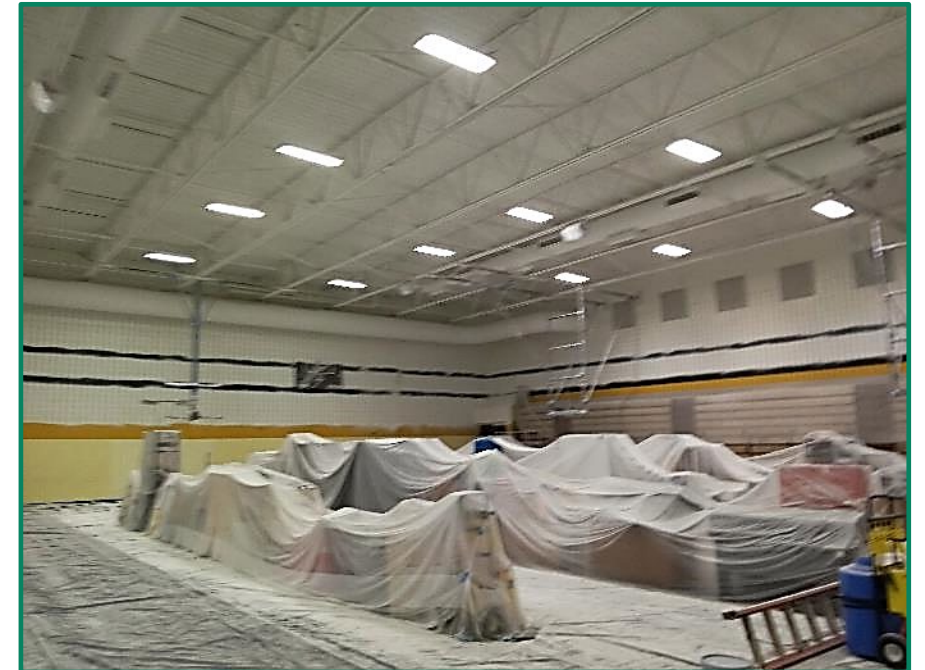
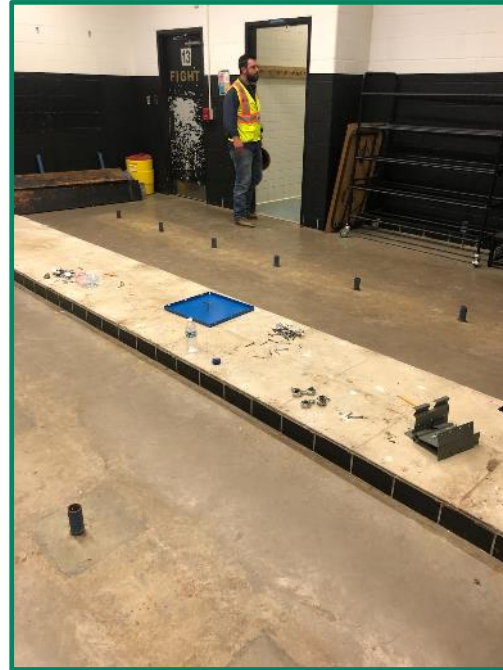
Temporary Bus Striping and sidewalk

Piers are complete, the foundation for the storm shelter is in place, storm shelter walls are in progress, site grading, and utility connections are in progress. Temporary bus striping and sidewalk are complete.

DFW concrete shortage and weather are causing delays to the construction schedule



Fossil Hill Middle School Fine Arts Addition/Renovation Progress



Locker room and gym progress

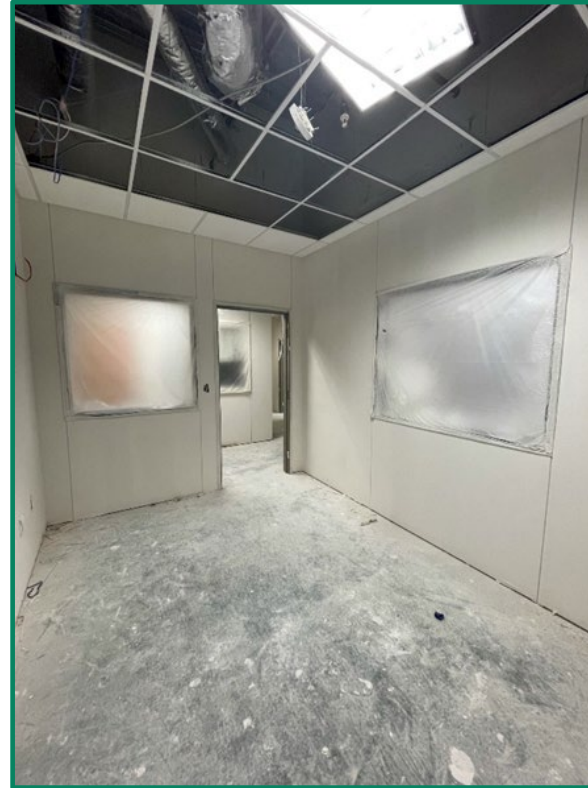
Site grading and utilities are in progress

Portables are arriving and being installed to be ready for the new school year

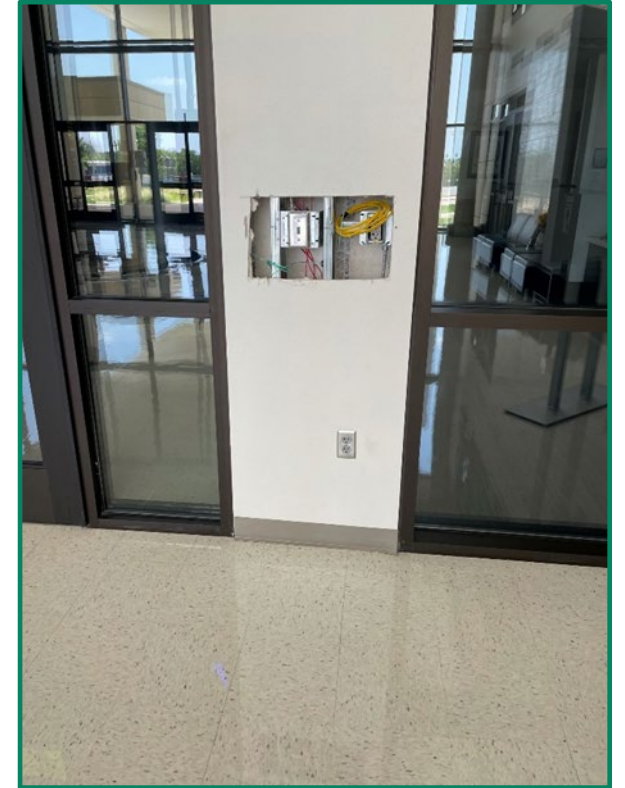
Gym renovations are in progress and will be completed prior to the start of the school year

Secure Entry Vestibules Phase No. 2 Progress

- Initial 23 campuses in phase No. 1 are complete
- Vandal resistant film for phases No. 1-2 will be complete by 7/30/2021
- Phase No. 2 includes the following campuses:
 - ✓ Willis ES
 - ✓ Bear Creek IS
 - ✓ New Directions HS
 - ✓ Keller HS
 - ✓ Early Learning Center North
 - ✓ North Riverside ES
 - ✓ Central HS
 - ✓ Fossil Ridge HS
 - ✓ Timbercreek HS
 - ✓ Liberty ES
- Construction activities are underway at all ten locations and the project will be substantially complete by August 11th.



Lonestar ES Painting



KHS Raptor Installation

Summer MEP Project Update

Construction is progressing at 12 KISD campuses

- 18 total Chillers & 33 pumps
- 27 total boilers and 5 water heaters
- LED lighting at Timber Creek auditorium

Completed Campuses:

- Park Glen ES, Bluebonnet ES, KCAL, Keller Harvell ES

Campuses in Progress:

- Keller MS (anticipated date of completion 7/28)
- Keller HS (anticipated date of completion 7/28)
- Fossil Ridge HS (anticipated completion date 7/28)
- Central HS (anticipated completion date 7/30)
- Timber creek HS (anticipated completion date 8/13)
- Shady Grove ES (anticipated completion date 8/6)
- Natatorium (Anticipated completion date 8/16)
- Parkwood Hill IS (chillers complete, boilers by 7/30)

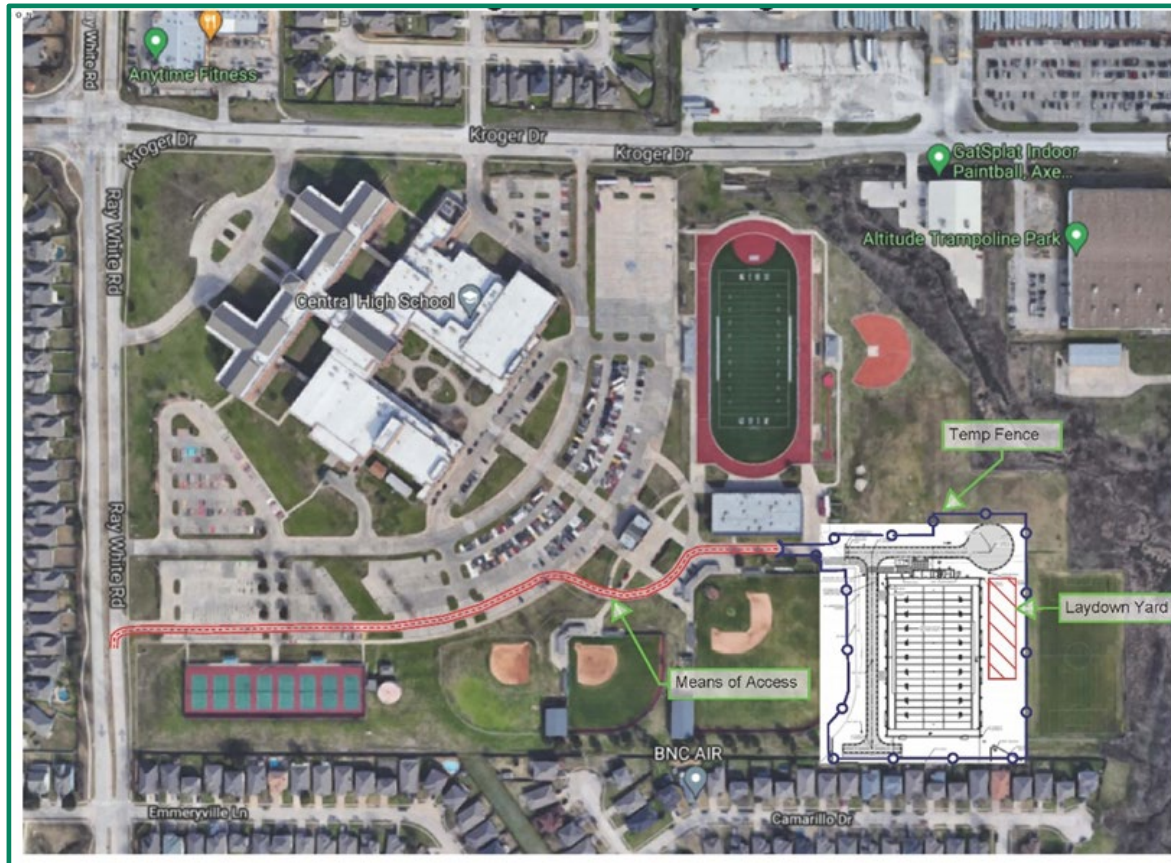


New Chiller for KCAL



Hydronic Boiler Replacement for KHS

HS Indoor Extracurricular Program Facilities Project Update



CHS Logistics and Safety Plan

Cadence McShane will start grading at CHS on 8/9 but will be utilizing cut material from Timber Creek HS (No impacts to band parking lot).

Grading at the three remaining campuses will start in November/December

Steel erection on all campuses will begin March 2022

Substantial completion on all 4 campuses by August 2022

Crisis Counseling Suites Project Update



KCA construction progress

All building permits are issued

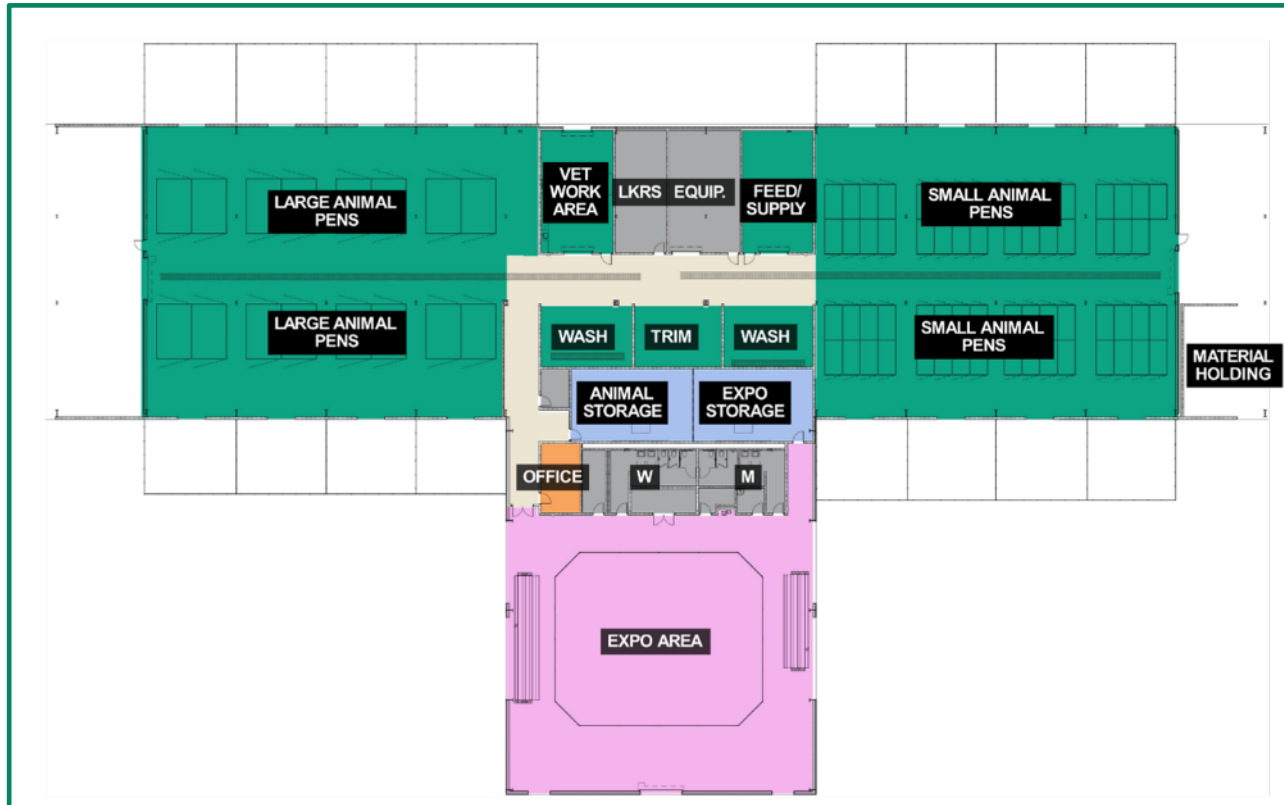
Tegrity has started the interior renovations at the Keller Collegiate Academy (KCA) with the goal of completing the suite prior to the start of the school year.

The team will jump on all three of the remaining suites at the following campuses after finishing KCA:

- Trinity Meadows IS
- Bear Creek IS
- Parkwood Hill IS

Construction should take approximately 8 months subject to materials availability

Agriscience Center Project Update



Agriscience Center Floor Plan

Contractor is Cadence McShane LLC

Steel portion of the facility bid with the HS Indoor Extracurricular Program facilities to allow early procurement for long lead and price escalation at \$851,146

Remaining facility bid from Cadence McShane \$7,285,936

Owner Contingency \$145,719

Total Change Order Amount \$7,431,665

Total Contracted Amount \$8,282,801

Construction Start date August 2021

Construction Completion date August 2022

Questions?

