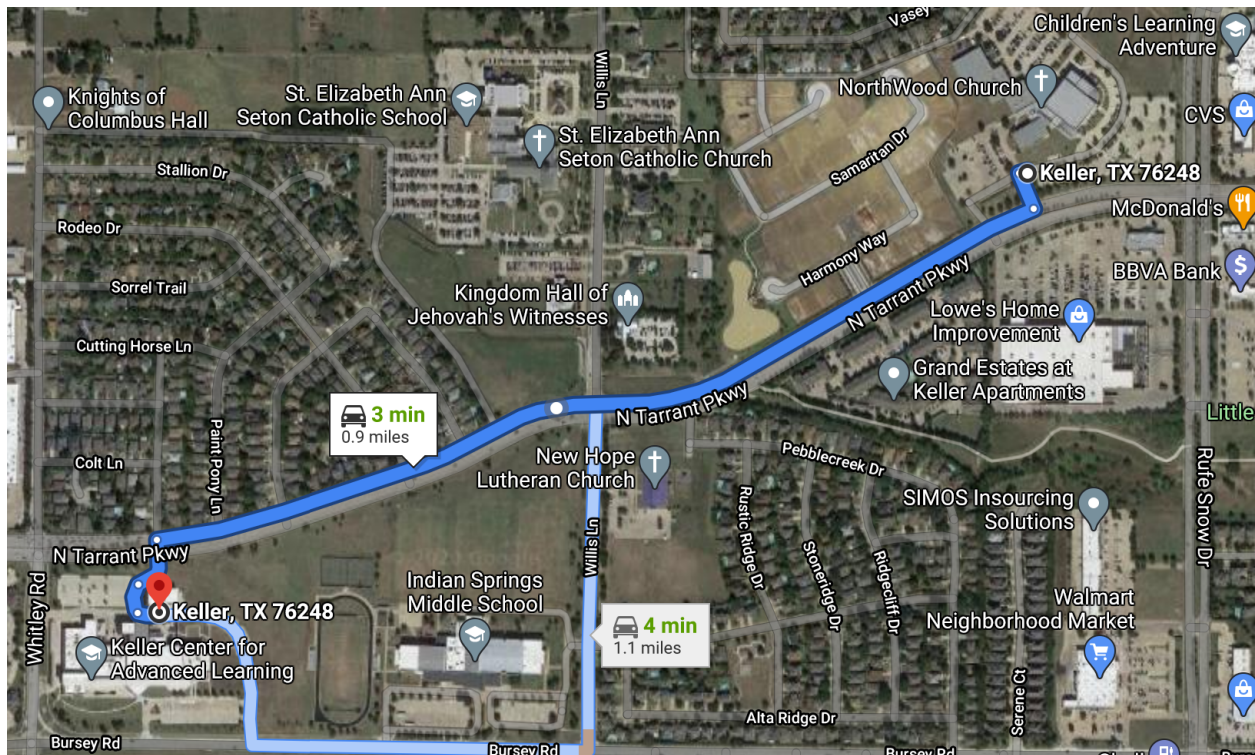


Hello KCAL Families!

As you may know, the KCAL facility has limited on-site parking accommodations. We have been working feverishly for alternative plans to accommodate the abundance of students at KCAL that would like the ability to drive to school. We are extremely excited to partner with Northwood Church (1870 Rufe Snow Dr., Keller, TX 76248) for the 3rd consecutive year to accommodate student parking. Northwood Church is just under a mile away from KCAL, for the use of one of their parking lots for overflow parking for KCAL students.



It is important to understand how all of the logistics of arrival and departure from KCAL work. ***The KCAL parking lot will be first come, first served in the south parking lot (off Bursey Road) only.*** When the KCAL parking lot is at full capacity, all overflow parking will be at Northwood Church. We will have shuttles running before and after each period to get students to and from Northwood and KCAL. The Northwood shuttle schedule is below. The times highlighted in red are the times when the shuttle is leaving from Northwood to KCAL. **It is *highly* recommended that students go directly to Northwood for parking to ensure students are on time to class instead of circling the KCAL parking lot and missing shuttle departure times.**

Shuttle Schedule for Northwood & KCAL:

Red is the departure time from Northwood Church

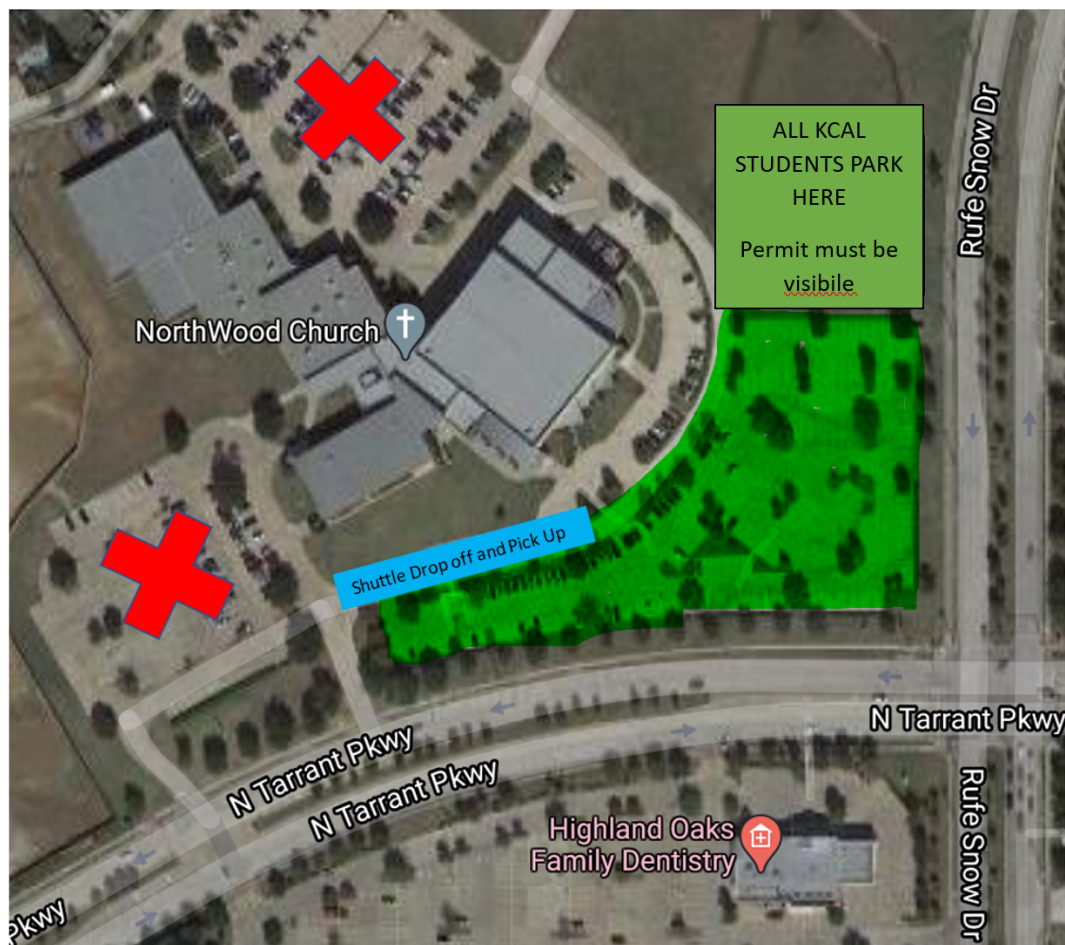
First Period (Even/Odd) - class time 7:40	
7:20-7:25	7:25-7:30
7:35-7:40	7:50-7:55
KCAL Dismissal 9:05/9:15-9:20	

2nd/3rd Period - Class time 9:35	
9:20-9:25	9:25-9:30
9:30-9:35	9:35-9:40
9:40-9:45	9:45-9:50
9:55-10:00	
KCAL Dismissal 10:49/10:59-11:04	

4th/5th Period - Class time 11:55	
11:40-11:45	11:45-11:50
11:50-11:55	11:55-12:00
12:00-12:05	12:05-12:10
12:10-12:15	12:15-12:20
KCAL Dismissal 1:05/1:15-1:20	

6th/7th Period - Class time 1:39	
1:25-1:30	1:30-1:35
1:35-1:40	1:40-1:45
1:45-1:50	1:50-1:55
1:55-2:00	
KCAL Dismissal 2:42/2:52-2:57	

Parking Locations:Northwood Church: Park in the green parking lot shown below. Parking in other areas (in grass, areas with the “X” on the map, etc) will be a violation of parking privileges.



KCAL to Northwood Shuttle:

After class at KCAL, the Northwood shuttle will be parked on Bursey Road, located outside the main KCAL entrance. Students will board this bus to return to the Northwood parking lot.

